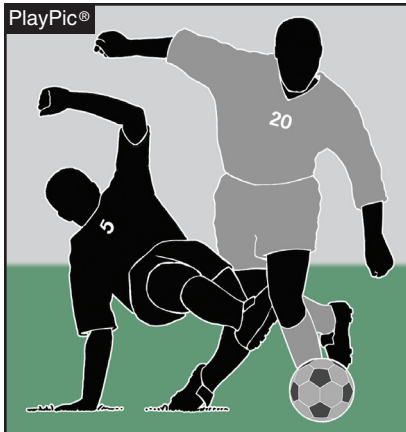


Officials Quiz 2011

Sponsored by the National Association of Sports Officials
Prepared by the Editors of *Referee* magazine



What is the restart after a slide tackle from behind? See question 10.

In each of the following, you are given a situation and at least two possible answers. You are to decide which answer or answers are correct for FIFA, NFHS or NCAA rules, which might vary. (Answers appear on final page.)

1. It is important to use the proper terminology, especially in writing game reports. Both NFHS and college use rules, while the *Laws of the Game* guide FIFA/USSF games, for example. Additionally, when B9 is shown a red card, in NFHS that player is disqualified, under NCAA rules, B9 is ejected and for a USSF game, B9 is sent off. Realizing that some terms below may be used under several offenses, identify which terms go with which category.

- a. A reason for a direct free kick foul.
- b. A reason to show a yellow card.
- c. A reason to show a red card.
- d. A reason for an indirect free kick foul or infraction.
- e. There is no infraction under this category.

- 1. Failure to respect the required distance on a restart.
- 2. Tripping or attempting to trip.

- 3. Spitting at an opponent.
- 4. Uses offensive, insulting or abusive (hostile) language or gesture.
- 5. Offside.
- 6. Enters or re-enters the field of play without the referee's permission
- 7. Serious foul play.
- 8. Impeding (obstruction).
- 9. Striking.
- 10. Denies an obvious goal-scoring opportunity by handling the ball.
- 11. Pushing.
- 12. Playing the ball from the ground.
- 13. Unintentional handling.
- 14. Show dissent by word or action.
- 15. Persistently infringes the Laws/rules.
- 16. Deliberate handling.
- 17. Goalkeeper touches the ball with the hands after it has been thrown in by a teammate.
- 18. Delays the restart of play.
- 19. Kicks or attempts to kick.
- 20. Prevents the goalkeeper from releasing the ball.

2. Match the various measurements/distances with the correct term.

- a. 27 to 28 inches.
- b. Eight yards.
- c. 130 yards.
- d. Nine inches.
- e. 120 yards.
- f. Two feet.
- g. Penalty mark.
- h. Penalty kick line.
- i. Maximum field length.
- j. Ball circumference.
- k. Width of a goal.

3. "A player shall be penalized for deliberately handling, carrying, striking or propelling the ball with a hand or arm." That quote from NFHS 12-2 contains one key word to understanding the offense. That word is:

- a. Striking.
- b. Hand.
- c. Deliberately.
- d. Arm.

4. Beginning in the 2013 fall season, the home team jerseys must be:

- a. Striped.
- b. A light color.
- c. White.
- d. In clear contrast to those worn by the visiting team.

5. After scoring the go-ahead goal with three minutes remaining, NFHS player A8 and six teammates go to the corner flag, drop to the ground, hug and remain there for approximately 15 seconds.

- a. A8 (and others, if the referee feels it is justified) must be shown the yellow card, once standing, and asked to depart the playing field. Team A may either replace A8 with A12 or play short.
- b. A8 must be shown the red and yellow cards simultaneously, once standing, and asked to depart the playing field. Team A may either replace A8 with A12 or play short.
- c. The referee has discretionary power to display a yellow card to A8 (and others) for excessive timewasting.
- d. The restart is an indirect free kick because of the caution to A8 (and others).
- e. The restart is a kickoff — any A8 misconduct *does not* change the restart.

6. Prior to a corner kick, keeper B1 violently kicks A9 inside the goal area. After ejecting B1, the restart is:

- a. Penalty kick for the kicking foul.
- b. Goalkick.
- c. Corner kick.
- d. Direct free kick for the kicking foul.

7. After a valid goal, the referee's mechanics are to:

- a. Signal to stop the clock.
- b. Point to the center circle.
- c. Do a, then b.

8. Attacker A8 and keeper B1 both go up for a high cross. With no illegal action, both are slightly injured during the collision and fall and both must be attended to on the field.

- a. Both A8 and B1 must depart the field due to receiving treatment.
 b. Only A8 must depart the field; B1 may stay on since she is the keeper.
 c. Since the treatment involved the goalkeeper, both A8 and B1 may remain on the field at the restart.
9. Four yards away from the goal, A8 leans on the shoulders of A9 and pushes upward in order to head a ball that A8 would not have otherwise been able to head. What is the decision?
 a. Continue playing, there has been no infraction.
 b. Stop play and award a dropped ball on the goal-area line.
 c. Stop play and award a direct free kick.
 d. Stop play and award an indirect free kick.
 e. The referee has discretionary power to caution A8 for unsporting behavior (“commits an act which, in the opinion of the referee, shows a lack of respect for the game”).
10. A6 makes a sliding tackle from behind B8, fouling her.
 a. Award a direct free kick.
 b. Award a direct free kick and admonish A6.
 c. Award a direct free kick and caution A6.
 d. Award a direct free kick and send off A6.
 e. Any of the above, depending on the situation.
11. Upon ending the game, what do the rules say are the officials’ (referee, two assistants and fourth official) responsibilities for reporting the results of the game?
 a. Provide the appropriate authorities with a match report, which includes information on any disciplinary action taken.
 b. Report in writing any disqualifications and unusual incidents to the proper authorities.
 c. The referee and assistant referees are to sign the official score form to verify cards issued, ejection reports and the official record of the game.
12. If a foul is careless, simply a miscalculation of strength or error in judgment, what is/are the proper referee actions?
 a. Award a direct free kick.
 b. Caution the player for unsporting behavior.
 c. Send off the player for serious foul play.
 d. A and b above.
13. The referee awards team A a direct free kick inside its own penalty area. A8 kicks the ball across the penalty area toward A6. Before the ball reaches A6, and before it leaves the penalty area, B4 enters the penalty area, intercepts the ball, shoots and scores.
 a. Valid goal, restart with a kickoff.
 b. No goal, caution B4 and award team A an indirect free kick.
 c. No goal, retake the original direct free kick.
 d. No goal, award a goal kick to team A.
14. During A4’s throw-in, B3 stands one yard away from A4. A4 refuses to put the ball into play, appealing to the referee for help. The referee should:
 a. Enforce a two-yard distance from the proper point of the throw-in, requiring B3 to move back at least one more yard.
 b. Require A4 to put the ball into play a yard to the left or right of B3 as long as B3 does not move from side to side to prevent the throw-in.
 c. Caution A4 for failing to respect the required distance.
 d. Caution B3 for unsporting conduct if B3 moves so as to be judged to interfere with the taking of the throw-in.
15. Keeper A1 makes a save inside the goal area and is injured on the play. A1 is lying face down on the ground, not moving, with the ball underneath him. The referee, after waiting a few seconds, sees that A1 is not going to release the ball into play and blows the whistle. After A1 is attended for the injury, the proper restart is:
 a. A dropped ball where play was stopped.
 b. A dropped ball on the goal-area line parallel to the goalline, closest to where the ball was when play was stopped.
 c. An indirect free kick for team A from where ball was when play was stopped.
- d. To let A1 release the ball into play by punting or throwing the ball from where A1 was when play was for the injury.
 e. Because the injury occurred to a goalkeeper, A1 does not have to depart the field until the next stoppage or until waved on by the referee.
 f. A1 may be substituted for or may remain off the field until the next stoppage of play. In that case another player on the field at the time of the incident may assume the goalkeeper position after a uniform switch.
16. The referee’s authority begins and ends:
 a. 15 minutes prior to the start of the game.
 b. 30 minutes prior to the start of the game.
 c. When the referee arrives at the field area.
 d. When the official leaves the area of the field after the game has been completed.
 e. After signing the official box score report and leaving the site of the competition.
 f. When the officials leave the field of play and its immediate surroundings.
17. After a particularly clever bit of footwork that fools the opponent, A10 returns to opponent B3 and says, “You’re nothing. I schooled you.” The referee’s action should be to:
 a. Show a red card (send off or ejection), if deemed to be taunting.
 b. Show a yellow card (caution), if deemed to be unsporting behavior.
 c. Show a yellow and red together (commonly known as “soft ejection”).
 d. Take no action; no misconduct has been committed.
18. During a game, the blue sky is speckled with dots — a swarm of bees flying across the field, from waist high up to 15 feet.
 a. Referees have the authority to temporarily suspend play.
 b. The players’ safety is paramount — the bees are outside agents interfering with play.
 c. Restart the game with a dropped ball.
 d. Restart the game with a drop ball if neither team is in possession.

e. Restart the game with an indirect free kick if one team had possession.

19. A7 commits a foul that is deemed worthy of a caution (A7's first caution of the contest). The referee whistles to stop play and:

a. Identifies and begins to move toward A7.

b. Draws A7 away from other players (unless retaliation is suspected).

c. Stops an arm's length away from A7 and begins to record any needed information.

d. Tells A7 the reason for the misconduct card and displays the yellow card well over the referee's own head.

e. Allows the coach to substitute for A7, at the coach's discretion.

f. Mandates that A7 leave the field, with the coach having the choice to bring another player onto the field or play short.

g. Informs both coaches, the scorer and fellow officials of the nature of the misconduct.

h. Should signal to stop the clock as soon as the determination is made to caution A7.

20. Competition rules state that if the game ends in a draw, the draw shall be settled by two five-minute periods of extra time, sudden death, meaning the first team to score shall be deemed the winner of the match.

a. That is not in accordance with FIFA Laws. No sudden-victory is allowed.

b. Despite it being illegal under FIFA, some youth competitions may allow this tie-breaking procedure for their local rule.

c. Two equal periods, not exceeding 15 minutes each, shall be played, unless there are provisions to use the away-goals rule in a home-and-away series.

d. If the state association/conference determines that is the tie-breaking procedure, then follow their rules of competition.

e. Under these rules of competition, no overtime procedures may exceed 20 minutes of play during the regular season.

f. Ties are broken using two sudden-victory periods of 10 minutes each.

QUIZ ANSWERS

(Editor's note: When this quiz was finalized, the 2010-11 rulebooks had not yet been printed and distributed. So FIFA and NFHS rule references come from Laws of the Game 2010-11 and 2010-11 NFHS Soccer Rules Book. The 2010-11 NCAA Soccer Rules and Interpretations references are current since changes are made every other year.)

1 — 1 — b; 2 — a; 3 — a; 4 — c; 5 — d; 6 — b; 7 — c; 8 — d; 9 — a; 10 — c; 11 — a; 12 — e; 13 — e; 14 — b; 15 — b; 16 — a; 17 — d; 18 — b; 19 — a; 20 — d. Number 3 was a trick question for the rules-astute referee. Spitting at an opponent is the direct free kick foul. Spitting at an opponent or any other person is the sending off offense. In either case, show the red card. Some of these reasons for misconduct (#7, #10) imply a direct free kick restart.

2 — a, j (FIFA 2; NFHS 2-2-1; NCAA 2.1); b, k (FIFA 1; NFHS 1-4-1; NCAA 1.9); c, i (FIFA 1); d, g (FIFA 1; NFHS 1-2-7; NCAA 1.6); e, i (NFHS 1-1-1; NCAA 1.1.1); f, h (NFHS 1-2-7; NCAA 1.6). Under NCAA rules, for field constructed after 1995, the minimum length is 115 yards (1.1.2).

3 — All — c (FIFA 12; NFHS 12-2; NCAA 12.2.8). While the NCAA rule does not specify the need for the action to be deliberate to be penalized, the associated AR 12.2.8 makes it clear that is the intent.

4 — FIFA — d (4); NFHS — c (4-1-1b); NCAA — d (4.2.1). The original NFHS rule change was voted for during the 2010 Soccer Rules Committee meeting with implementation intended for 2012, but the NFHS Board of Directors delayed implementation from 2012 to 2013.

5 — FIFA — c, e (5, 8, 12, *Advice to Referees* 12.28.4); NFHS — a, e (8-1-1, 12-8-1f 12); NCAA — c, e (8.3, 12.5.6). This is an NFHS rule

change for 2011, reducing the penalty for excessive time wasting from a red/yellow to a yellow card.

6 — All — c (FIFA 9, 17; NFHS 9-1-1, 9-1-3, 12-8-3a, 17-1-3; NCAA 9-2)

7 — FIFA — b (Guide to Procedures, General Positioning During Play, Goal, page 25); NFHS — c (7-4-1, NFHS Official Soccer Signals); NCAA — c (6.3.5.7, Appendix A, Official Referee's Signals). This is an NFHS rule change for 2011, adding the valid goal signal (#9).

8 — FIFA — c (*Advice to Referees* 3.13, 5.9); NFHS — a (3-3-1c 2); NCAA — b (3.4.9 Note, AR 5.5.6.1.b). This is an NFHS rule change for 2011. The interpretation had always been that B1 depart the field, but by adding three words, an editorial change makes it crystal clear that "A player, including the goalkeeper, who is injured and attended to on the field or who is deemed injured by the referee shall be replaced."

9 — All — d, e (FIFA 12, *Advice to Referees* 12.28.1, NFHS 5-3-2g, 12-8-1f; NCAA 5.5.2, 12.1.1, 12.4.9, 12.5.5)

10 — All — e (FIFA 12, *Advice to Referees* 12.3, 12.8, 12.28.1, 12.33; NFHS 12-1-1, 12-1-2, 12-8-1f 10, 12-8-3d; NCAA 12.2.2, 12.3.1, 12.5.5)

11 — FIFA — a (5); NFHS — b (5-4-1b); NCAA — c (6.4.3)

12 — All — a (FIFA 12, *Advice to Referees* 12.3; NFHS 12-1, 12-2, 12-3, 12-4-1, 12-4-2a; NCAA 12.2, 12.6.2, 12.6.3, 12.6.4, 12.6.5)

13 — All — c (FIFA 13, *Advice to Referees* 13.6; NFHS 13-3-2; NCAA 13.2)

14 — FIFA — a, d (12, 15, *Advice to Referees* 15.7); NFHS — a, d (15-1-3); NCAA — d (15.2)

AR 15.2.b). This was an NFHS 2010-11 rule change, adding the two-yard distance.

15 — FIFA — b, e (8); NFHS — c, f (3-3-1c 2, 9-3); NCAA — b, e (5.5.6.1.b, 9.3.2)

16 — FIFA — c, d (5, *Advice to Referees* 5.2); NFHS — a, f (5-1-2); NCAA — b, e (5.3.1, 5.4.2). The NFHS answer of "a" does have some limitations, i.e., Rule 1-7 allows host management to decide a field's playable condition right up until game start time.

17 — FIFA — b (12, *Advice to Referees* 12.27, 12.28.1); NFHS — a (12-8-3b and NOTE, 12.8.3 Situation A); NCAA — b (12.5.5). *Referee* choose A10's words as one example of taunting. The question points out the rule difference that NFHS has a more severe penalty for taunting. "Commits an act which, in the opinion of the referee, shows a lack of respect for the game (e.g., aggressive attitude, inflammatory behavior, or taunting)" is the quote from 12.28.1. NFHS 12-8-3b Note: "The NFHS disapproves of any form of taunting which is intended or designed to embarrass, ridicule or demean others under any circumstances including on the basis of race, religion, gender or national origin."

18 — FIFA — a, b, c (5, 8); NFHS — a, b, d, e (5-3-2e, 9-2-1c, 9-3); NCAA — a, b, c (5.5.1, 9.3.2)

19 — FIFA — a, b, c, d, e (12, *Guide to Procedures/Misconduct*); NFHS — a, b, c, d, f, g, h (5-3-1b, 5-3-1e, 12-8-1 Penalty, NFHS Official Soccer Signals); NCAA — a, b, c, d, e, h (5.5.2, 12.14, Appendix A, Official Referee's Signals)

20 — FIFA — a, b, c (10, *Advice to Referees* 10.8, Procedures to Determine the Winner of a Match); NFHS — d, e (7-3-1, Sample Tie-breaking Procedure); NCAA — f (7.1.1, 7.1.2))